

## Install Driver

It's necessary to install the driver if it's the first time to use OBDBook online update, follow the steps below for the installation:

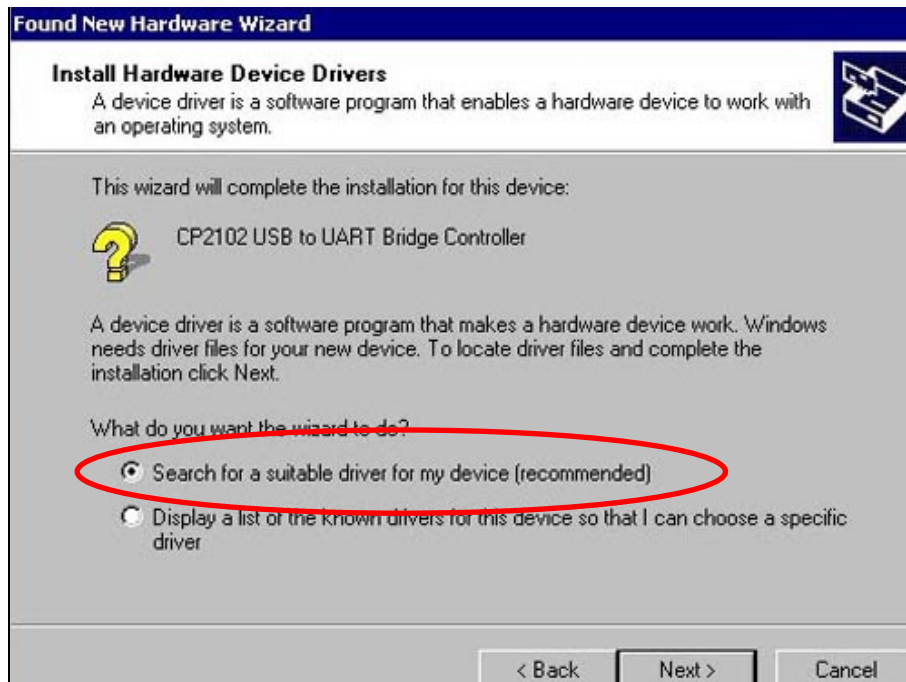
5.1 If it's the first time to connect OBDBook to PC via a USB cable, a dialog box as below will be popped up:



Then, another dialog box as below will appear:



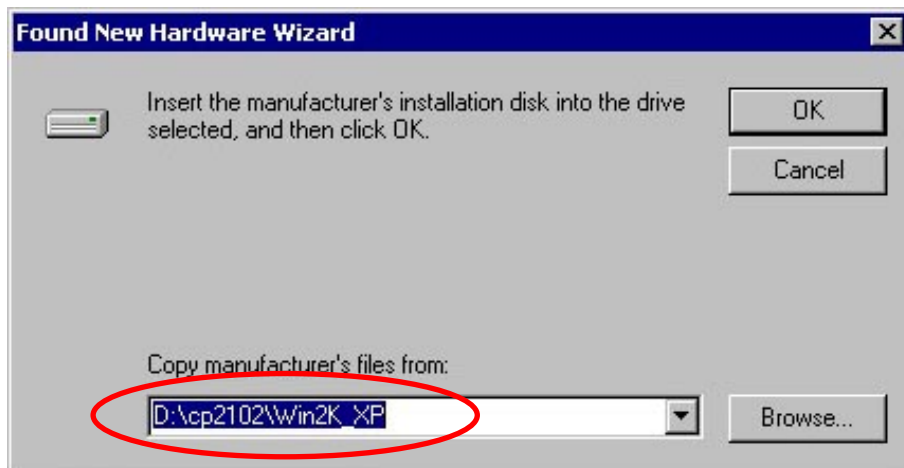
Click 'Next' to enter a sequent dialog box as below:



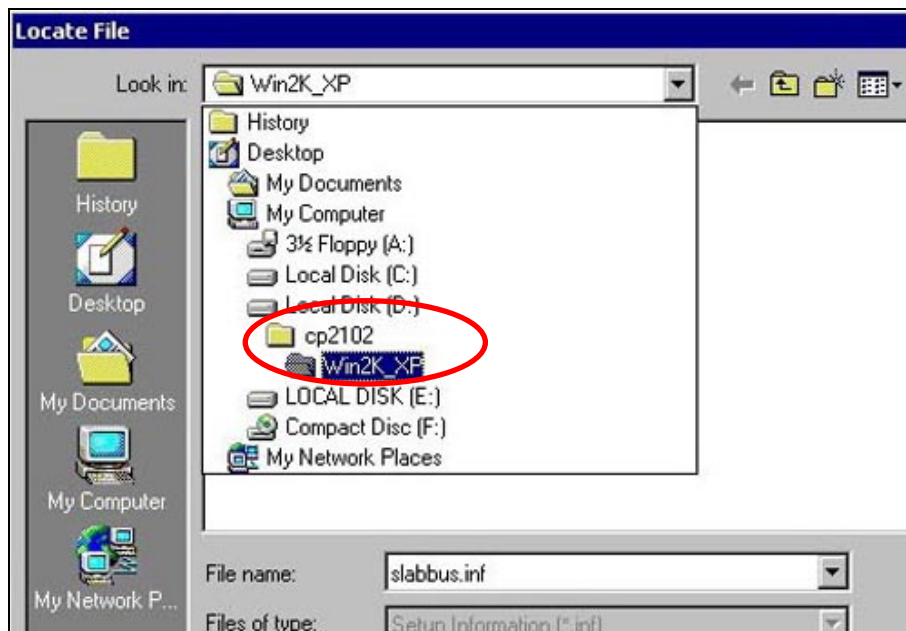
Select 'Search for a suitable driver for my device (recommended)' and click 'Next', →



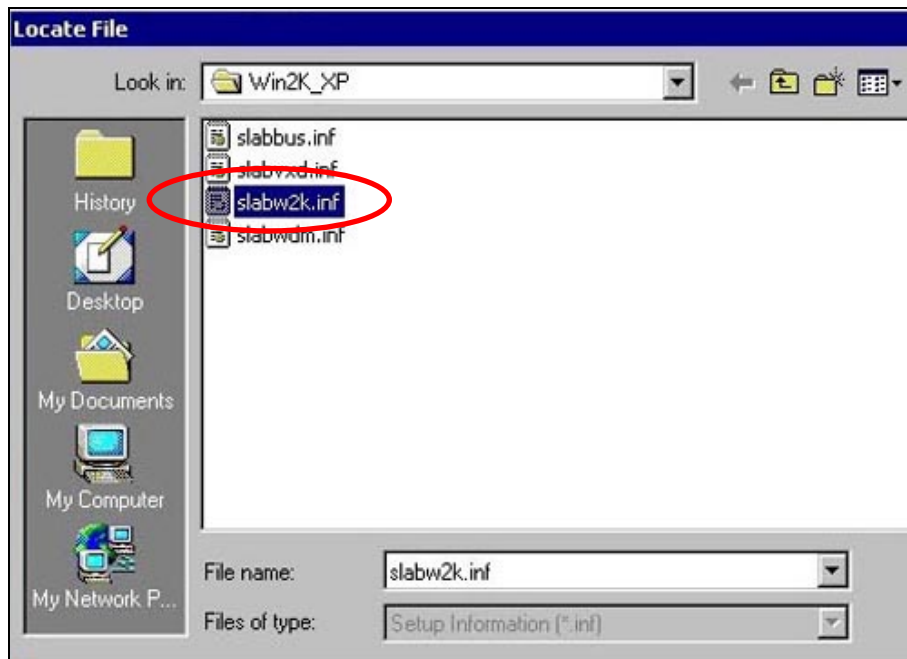
Tick in the box to the left of 'Specify a location' to select driver from the existing catalogue, then click 'Next', →



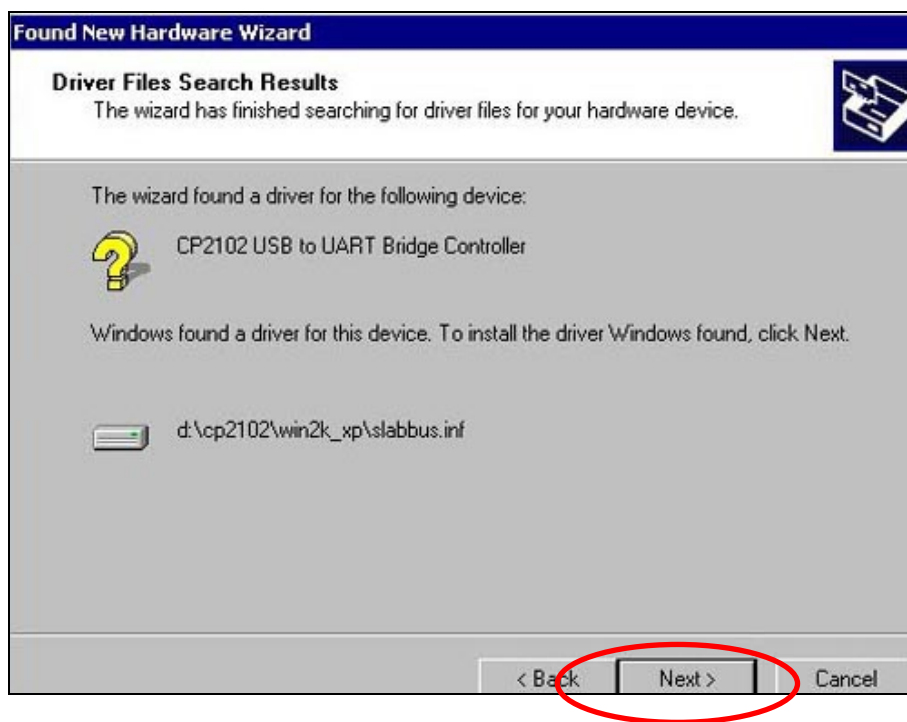
Click 'Browse' and find the related driver from the directory of disk path which has been selected in step 4.1.1, as below:



Click 'OK', →



Select 'slabw2k.inf', and click 'OK', →

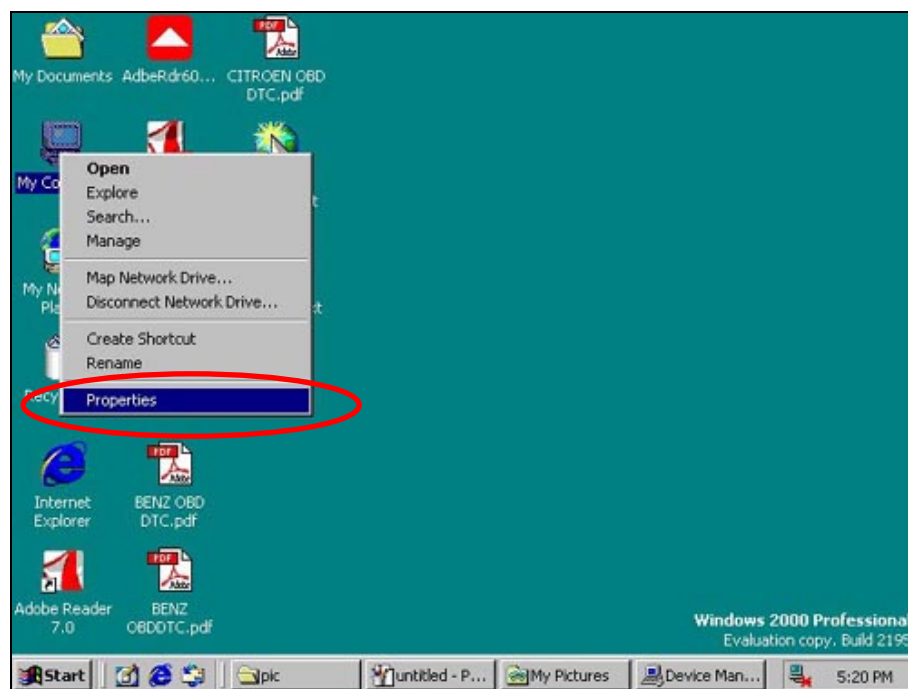


Click 'Next', →

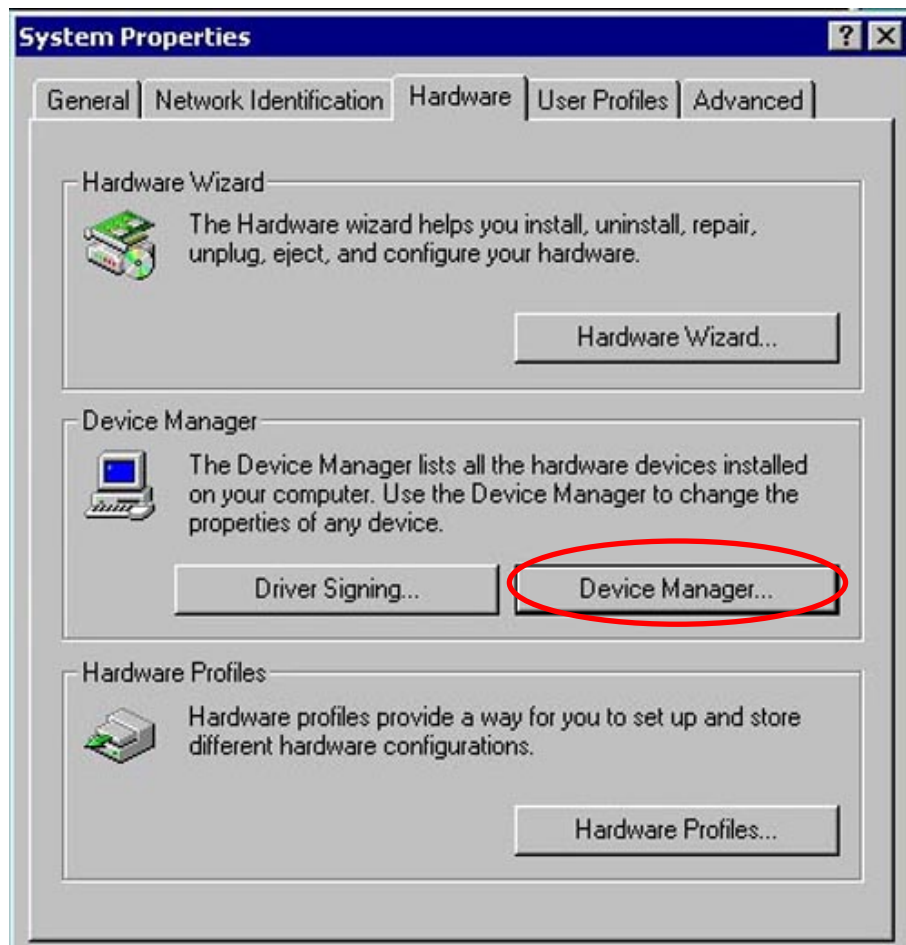


Click 'Finish' to end the installation.

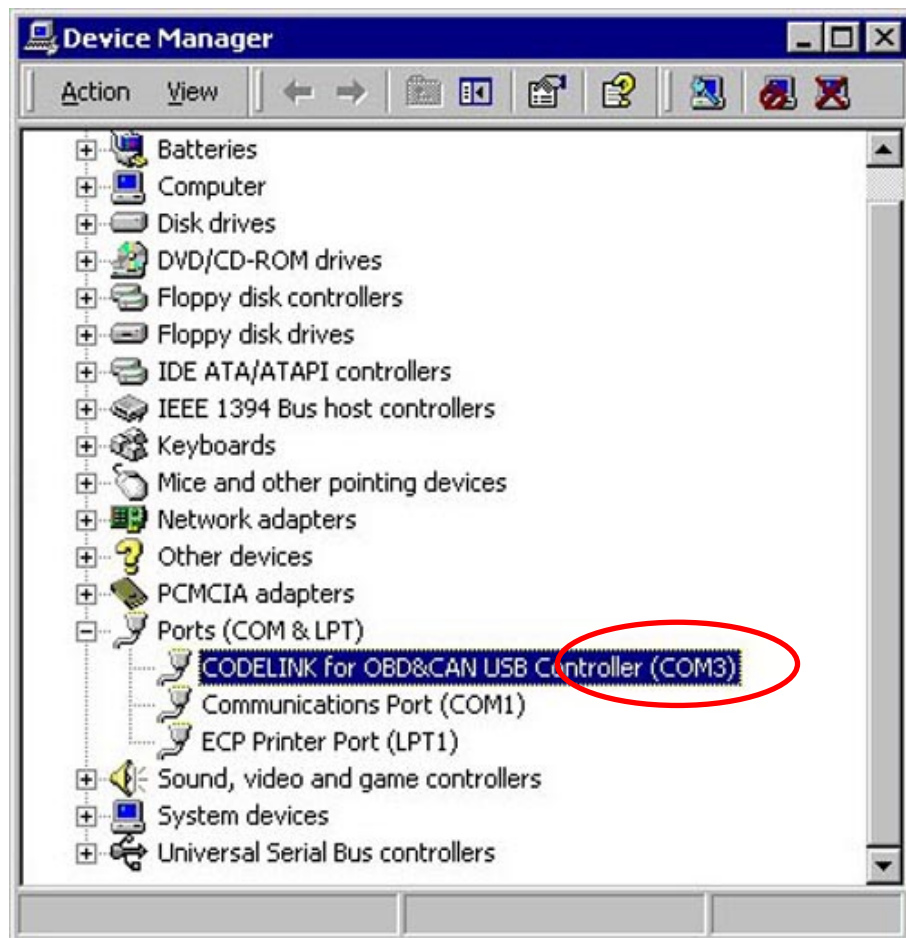
5.2 You have completed OBDBook driver installation successfully, but we are not aware of the locations of the USB installed, please perform as the followings:



5.2.1 Back to WINDOW desktop, right click 'My computer' and select 'Properties' in the pop up menu.



5.2.2 A dialog box will be popped up, click 'Device Manager', another dialog box as below will appear:



Till now, CODELINK for OBD&CAN driver has been installed completely, the default port is 'COM3', which is the PORT needed for the update.